

Placing the Dolly on Track:

There are a variety of scenarios where placing the camera dolly on track may be advantageous.

Our camera dollies come equipped to use our square track or ride atop round track as well. Various accessories are available to make this transition easier.

Care and consideration must be given to the surface the equipment will be used on. Will the surface bear the weight of all the equipment and personnel? Will the track be able to be leveled safely?



Latch Pins:

Latch pins allow Standard



and accessory dolly wheels to better follow the contours on any configuration of a track layout, Round or Square, with transitions from STRAIGHT to CURVE.

Two latch pins are stored on the dolly bumper along with the two hex (allen) keys.

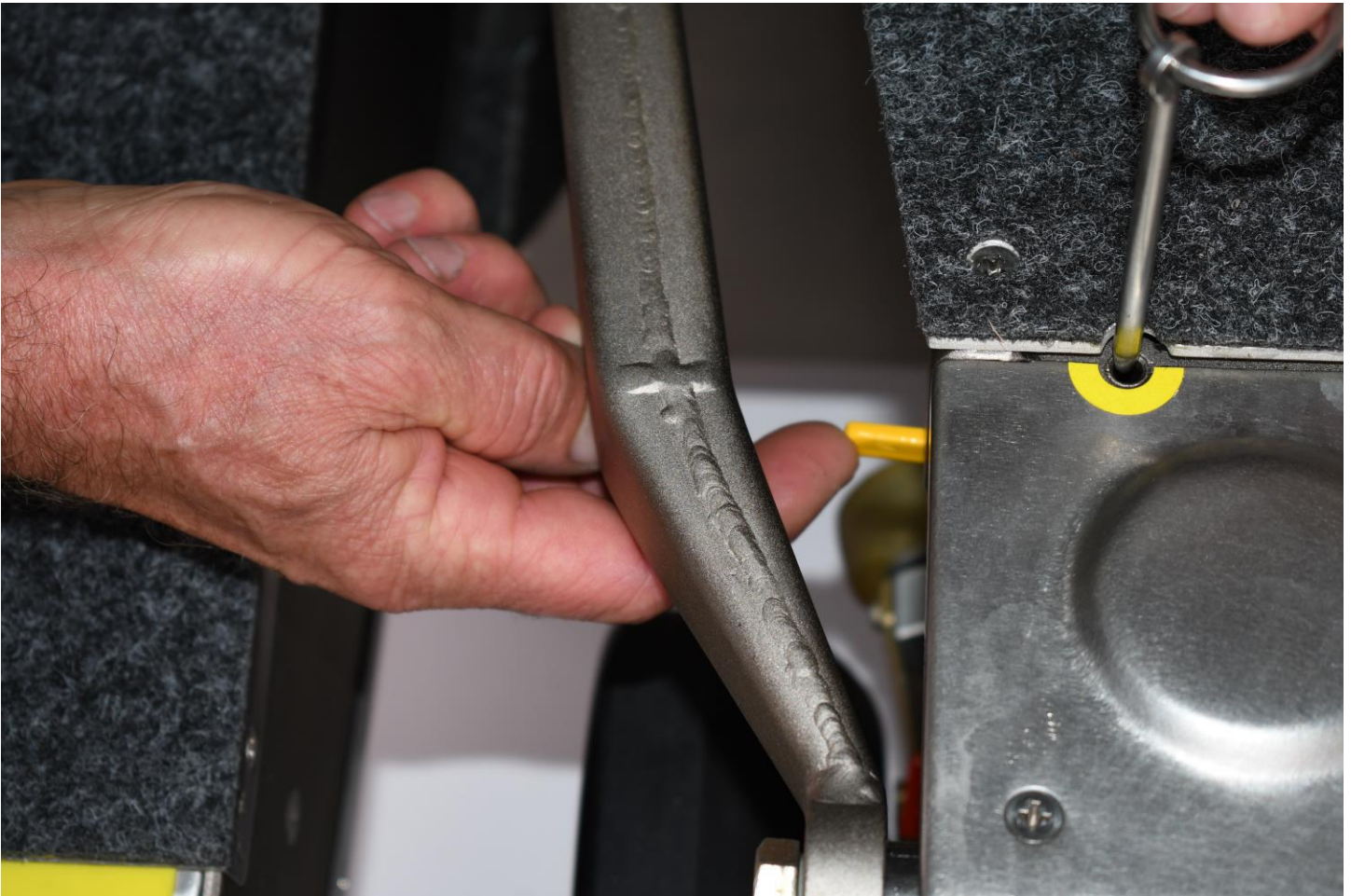


These latch pins are inserted into holes located on the front (camera) end of the dolly, directly over each pair of wheels. These holes are marked with a yellow semi-circle sticker.

The yellow latch handles are located just to the inboard side of these latch holes.

To **INSTALL** *pins*:

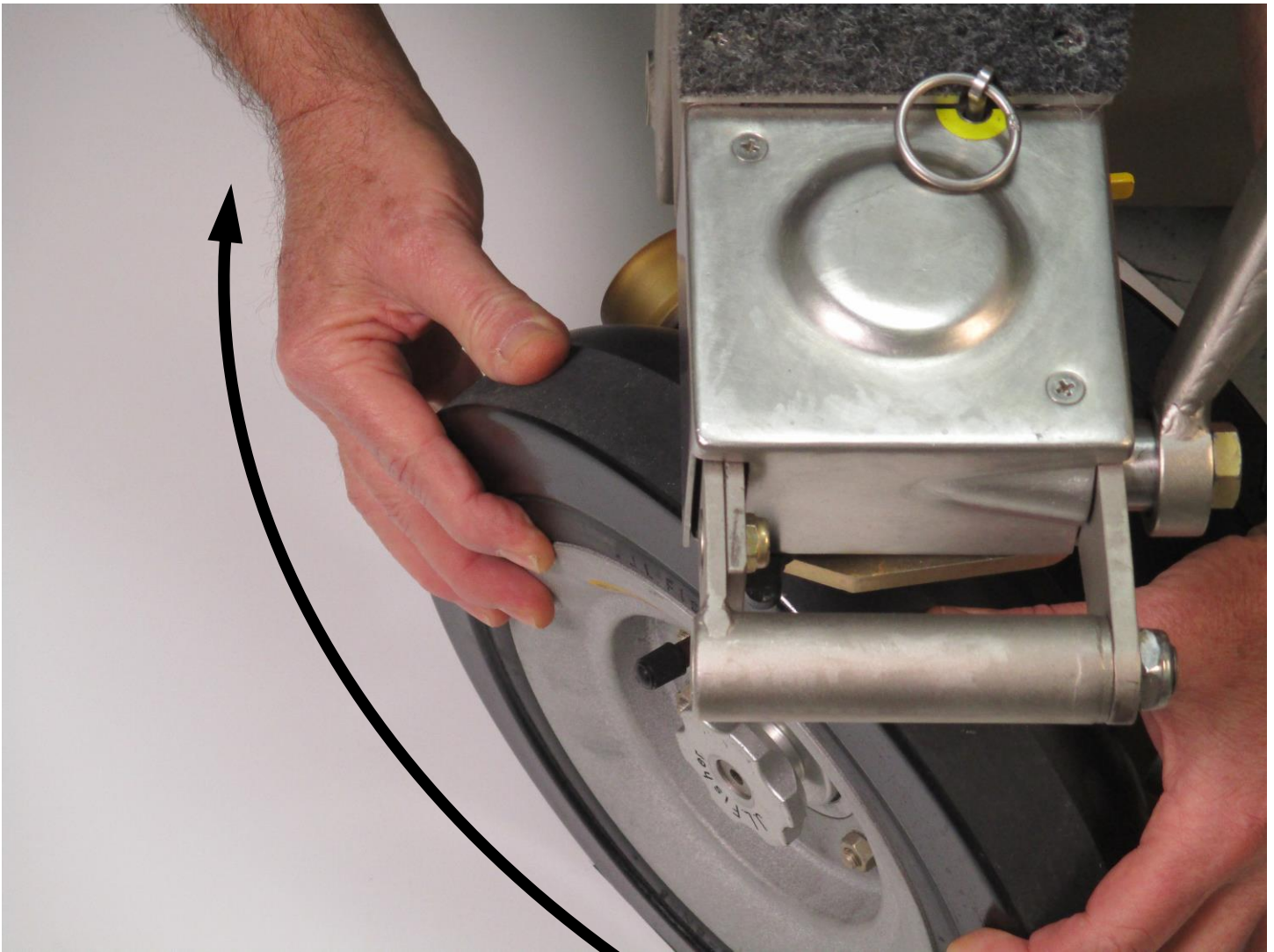
- Place dolly onto track.
- Push back on the spring loaded yellow latch handle and insert pin into the hole.





- Repeat on opposite side.

Best results come from shifting dolly into **REAR** steer mode.



360°

With the latch pins in place, the wheels will spin freely- allowing them to follow contour of the track.

Steering Lock:

We have been made aware that occasionally customers lock the steering to help hold the wheels straight on and off track. J.L. Fisher did not design the equipment to operate that way; however, this helps quiet the TTW/ETW on round track, and is also useful on a dolly push in a straight line off track. If you would like to do this- please follow these guidelines.

*To **LOCK** the steering in the straight ahead position:*

- Shift dolly into rear steer.

Using a rope or similar device- **hold shift lever towards the steering post and secure tightly.** This fully engages the steering lock cam internally and avoids the slow bleed off of hydraulic pressure

